

# Scientific Documentation

## **Sodium Chloride, USP, EP, BP, JP, bioCERTIFIED (TM)**

Not appropriate for regulatory submission.

Please visit [www.spectrumchemical.com](http://www.spectrumchemical.com) or contact Tech Services for the most up-to-date information contained in this information package.

Spectrum Chemical Mfg Corp  
769 Jersey Avenue  
New Brunswick, NJ 08901  
Phone 732.214.1300



## **Table of Contents**

Product Specification  
Certificate of Analysis  
Safety Data Sheet (SDS)  
Certification of Current Good Manufacturing Practices (cGMP)  
Manufacturing Process Flowchart  
Technical Statements  
Elemental Impurities Statement  
Residual Solvents Statement  
General Label Information – Sample Label

# Specification for Sodium Chloride, USP, EP, BP, JP, bioCERTIFIED (TM) (S9200)

Item Number	S9200
Item	Sodium Chloride, USP, EP, BP, JP, bioCERTIFIED (TM)
CAS Number	7647-14-5
Molecular Formula	NaCl
Molecular Weight	58.44
MDL Number	
Synonyms	Salt

Test	Specification	
	Min	Max
APPEARANCE		
ASSAY (NaCl; DRIED BASIS)	99.0	100.5%
APPEARANCE OF SOLUTION	CLEAR AND COLORLESS	
ACIDITY OR ALKALINITY		0.5 ml
LOSS ON DRYING		0.5 %
BROMIDES		100 ppm
PHOSPHATES		25 ppm
IODIDES	NO BLUE COLOR	
ALUMINUM		0.2 ppm
POTASSIUM		500 ppm
MAGNESIUM AND ALKALINE-EARTH METALS (as Ca)		100 ppm
ARSENIC (As)		1 ppm
IRON (Fe)		2 ppm
BARIUM (Ba)	NO MORE OPALESCENT THAN STANDARD	
FERROCYANIDES	NO BLUE COLOR	
SULFATE (SO <sub>4</sub> )		200 ppm
NITRITES		0.01
HEAVY METALS		3 ppm

Test	Specification	
	Min	Max
ELEMENTAL IMPURITIES	AS REPORTED	
BACTERIAL ENDOTOXINS		5 IU/g
TAMC		1000 CFU/g
TYMC		100 CFU/g
IDENTIFICATION A	POSITIVE FOR SODIUM	
IDENTIFICATION B	POSITIVE FOR CHLORIDE	
EXPIRATION DATE		
DATE OF MANUFACTURE		
RESIDUAL SOLVENTS	AS REPORTED	

***Spectrum Chemical Mfg Corp***

---

<b>Corporate Headquarters:</b>	<b>West Coast Facility:</b>
769 Jersey Ave.	14422 S. San Pedro St.
New Brunswick, NJ 08901	Gardena, CA 90248
732.214.1300	310.516.8000

## Certificate Of Analysis

Item Number	S9200	Lot Number	4MI0082
Item	Sodium Chloride, USP, EP, BP, JP, bioCERTIFIED (TM)	CAS Number	7647-14-5
Molecular Formula	NaCl	Molecular Weight	58.44

TEST	SPECIFICATION		RESULT
	MIN	MAX	
APPEARANCE			WHITE CRYSTALLINE POWDER
ASSAY (NaCl; DRIED BASIS)	99.0	100.5%	99.0 %
APPEARANCE OF SOLUTION	CLEAR AND COLORLESS		CLEAR AND COLORLESS
ACIDITY OR ALKALINITY		0.5 ml	<0.5 ml
LOSS ON DRYING		0.5 %	0.1 %
BROMIDES		100 ppm	<100 ppm
PHOSPHATES		25 ppm	<25 ppm
IODIDES	NO BLUE COLOR		NO BLUE COLOR
ALUMINUM		0.2 ppm	<0.2 ppm
POTASSIUM		500 ppm	<500 ppm
MAGNESIUM AND ALKALINE-EARTH METALS (as Ca)		100 ppm	<100 ppm
ARSENIC (As)		1 ppm	<0.05 ppm
IRON (Fe)		2 ppm	<2 ppm
BARIUM (Ba)	NO MORE OPALESCENT THAN STANDARD		NO MORE OPALESCENT THAN STANDARD
FERROCYANIDES	NO BLUE COLOR		NO BLUE COLOR
SULFATE (SO <sub>4</sub> )		200 ppm	<200 ppm
NITRITES		0.01	<0.01
HEAVY METALS		3 ppm	0.012 ppm
ELEMENTAL IMPURITIES	AS REPORTED		COMPLIES WITH STANDARD

TEST	SPECIFICATION		RESULT
	MIN	MAX	
BACTERIAL ENDOTOXINS		5 IU/g	<4.8 IU/g
TAMC		1000 CFU/g	<100 CFU /g
TYMC		100 CFU/g	<10 CFU/g
IDENTIFICATION A	POSITIVE FOR SODIUM		POSITIVE FOR SODIUM
IDENTIFICATION B	POSITIVE FOR CHLORIDE		POSITIVE FOR CHLORIDE
EXPIRATION DATE			18-JAN-2026
DATE OF MANUFACTURE			18-JAN-2023
RESIDUAL SOLVENTS	AS REPORTED		NO RESIDUAL SOLVENT USED
MONOGRAPH EDITION			EP 11 BP 11
MONOGRAPH EDITION			JP 18TH
MONOGRAPH EDITION			USP 2023

Certificate of Analysis Results Entered By:

GHERRERA  
Genaro Herrera  
27-DEC-23 06:36:59

Spectrum Chemical Mfg Corp  
777 Jersey Avenue  
New Brunswick 08901 NJ



Certificate of Analysis Results Approved By:

MCAMACHO  
Matheu Camacho  
28-DEC-23 05:53:37

All pharmaceutical ingredients are tested using current edition of applicable pharmacopeia.

Read and understand label and SDS before handling any chemicals. All Spectrum's chemicals are for manufacturing, processing, repacking or research purposes by experienced personnel only. It is the customer's responsibility to provide adequate hazardous material training and ensure that appropriate Personal Protective Equipment (PPE) is used before handling any chemical.

# SAFETY DATA SHEET

# spectrum®



Revision date 29-September-2021

Revision Number 2

## 1. Identification

### Product identifier

**Product Name** SODIUM CHLORIDE, USP, EP, BP, JP, BIOCERTIFIED™

### Other means of identification

**Product Code(s)** S9200

**Synonyms** None

### Recommended use of the chemical and restrictions on use

**Recommended use** No information available

**Restrictions on use** No information available

### Details of the supplier of the safety data sheet

#### Supplier Address

Spectrum Chemical Mfg. Corp.  
14422 South San Pedro St.  
Gardena, CA 90248  
(310) 516-8000

### Emergency telephone number

**Emergency Telephone** Chemtrec 1-800-424-9300

## 2. Hazard(s) identification

### Classification

This chemical is not considered hazardous by the 2012 OSHA Hazard Communication Standard (29 CFR 1910.1200).

### Hazards not otherwise classified (HNOC)

Not applicable

### Label elements

#### Hazard statements

This chemical is not considered hazardous by the 2012 OSHA Hazard Communication Standard (29 CFR 1910.1200).

The product contains no substances which at their given concentration, are considered to be hazardous to health.

**Appearance** Crystalline or granules or powder

**Physical state** Solid

**Odor** No information available

**Other information**

No information available.

**3. Composition/information on ingredients****Substance**

Chemical name	CAS No	Weight-%	Trade secret
Sodium Chloride	7647-14-5	100	*

\*The exact percentage (concentration) of composition has been withheld as a trade secret.

**4. First-aid measures****Description of first aid measures**

Inhalation	Remove to fresh air.
Eye contact	Rinse thoroughly with plenty of water for at least 15 minutes, lifting lower and upper eyelids. Consult a physician.
Skin contact	Wash skin with soap and water.
Ingestion	Clean mouth with water and drink afterwards plenty of water.

**Most important symptoms and effects, both acute and delayed**

Symptoms	No information available.
----------	---------------------------

**Indication of any immediate medical attention and special treatment needed**

Note to physicians	Treat symptomatically.
--------------------	------------------------

**5. Fire-fighting measures**

<b>Suitable Extinguishing Media</b>	Use extinguishing measures that are appropriate to local circumstances and the surrounding environment.
<b>Large Fire</b>	CAUTION: Use of water spray when fighting fire may be inefficient.
<b>Unsuitable extinguishing media</b>	Do not scatter spilled material with high pressure water streams.
<b>Specific hazards arising from the chemical</b>	No information available.
<b>Explosion data</b>	
<b>Sensitivity to mechanical impact</b>	none.
<b>Sensitivity to static discharge</b>	none.
<b>Special protective equipment for fire-fighters</b>	Firefighters should wear self-contained breathing apparatus and full firefighting turnout gear. Use personal protection equipment.

**6. Accidental release measures**



## **Personal precautions, protective equipment and emergency procedures**

**Personal precautions**                      Ensure adequate ventilation.

## **Methods and material for containment and cleaning up**

**Methods for containment**                      Prevent further leakage or spillage if safe to do so.

**Methods for cleaning up**                      Pick up and transfer to properly labeled containers.

## **7. Handling and storage**

### **Precautions for safe handling**

**Advice on safe handling**                      Handle in accordance with good industrial hygiene and safety practice.

### **Conditions for safe storage, including any incompatibilities**

**Storage Conditions**                      Hygroscopic. It absorbs moisture from the air. Protect from moisture. Keep container tightly closed in a dry and well-ventilated place.

## **8. Exposure controls/personal protection**

### **Control parameters**

**Exposure Limits**                      The following ingredients are the only ingredients of the product above the cut-off level (or level that contributes to the hazard classification of the mixture) which have an exposure limit applicable in the region for which this safety data sheet is intended or other recommended limit. At this time, the other relevant constituents have no known exposure limits from the sources listed here.

### **Appropriate engineering controls**

**Engineering controls**                      Showers  
Eyewash stations  
Ventilation systems.

### **Individual protection measures, such as personal protective equipment**

**Eye/face protection**                      No special protective equipment required.

**Skin and body protection**                      No special protective equipment required.

**Respiratory protection**                      No protective equipment is needed under normal use conditions. If exposure limits are exceeded or irritation is experienced, ventilation and evacuation may be required.

**General hygiene considerations**                      Handle in accordance with good industrial hygiene and safety practice.

## **9. Physical and chemical properties**

### **Information on basic physical and chemical properties**

**Physical state**                      Solid

<b>Appearance</b>	Crystalline or granules or powder
<b>Color</b>	White
<b>Odor</b>	No information available
<b>Odor threshold</b>	No information available

<u>Property</u>	<u>Values</u>	<u>Remarks • Method</u>
pH	no data available	None known
Melting point / freezing point	801 °C / 1473.8 °F	None known
Boiling point / boiling range	1413 °C / 2575.4 °F	None known
Flash point	no data available	None known
Evaporation rate	no data available	None known
Flammability (solid, gas)	no data available	None known
Flammability Limit in Air		None known
Upper flammability or explosive limits	No data available	
Lower flammability or explosive limits	No data available	
Vapor pressure	No data available	None known
Vapor density	no data available	None known
Relative density	2.165	None known
Water solubility	Soluble in water	None known
Solubility(ies)	Soluble in Glycerol Very slightly soluble in Ethanol Insoluble in Hydrochloric acid	None known
Partition coefficient	No data available	None known
Autoignition temperature	no data available	None known
Decomposition temperature		None known
Kinematic viscosity	no data available	None known
Dynamic viscosity	No data available	None known
<u>Other information</u>		
Explosive properties	No information available	
Oxidizing properties	No information available	
Softening point	No information available	
Molecular weight	58.44	
VOC Content (%)	No information available	
Liquid Density	No information available	
Bulk density	No information available	

## 10. Stability and reactivity

<b>Reactivity</b>	No information available.
<b>Chemical stability</b>	Stable under recommended storage conditions.
<b>Possibility of hazardous reactions</b>	None under normal processing.
<b>Conditions to avoid</b>	None known based on information supplied.
<b>Incompatible materials</b>	None known based on information supplied.
<b>Hazardous decomposition products</b>	None known based on information supplied.

## 11. Toxicological information

### Information on likely routes of exposure

<b>Inhalation</b>	Specific test data for the substance or mixture is not available.
<b>Eye contact</b>	Specific test data for the substance or mixture is not available.
<b>Skin contact</b>	Specific test data for the substance or mixture is not available.

**Ingestion**

Specific test data for the substance or mixture is not available.

**Symptoms related to the physical, chemical and toxicological characteristics****Symptoms**

No information available.

**Acute toxicity****Numerical measures of toxicity****Component Information**

Chemical name	Oral LD50	Dermal LD50	Inhalation LC50
Sodium Chloride 7647-14-5	= 3 g/kg ( Rat )	> 10 g/kg ( Rabbit )	> 42 g/m <sup>3</sup> ( Rat ) 1 h

**Delayed and immediate effects as well as chronic effects from short and long-term exposure****Skin corrosion/irritation**

No information available.

**Serious eye damage/eye irritation**

No information available.

**Respiratory or skin sensitization**

No information available.

**Germ cell mutagenicity**

No information available.

**Reproductive toxicity**

No information available.

**STOT - single exposure**

No information available.

**STOT - repeated exposure**

No information available.

**Aspiration hazard**

No information available.

**Other adverse effects**

No information available.

**Interactive effects**

No information available.

**12. Ecological information****Ecotoxicity**

Chemical name	Algae/aquatic plants	Fish	Toxicity to microorganisms	Crustacea
Sodium Chloride 7647-14-5	-	LC50: 4747 - 7824mg/L (96h, Oncorhynchus mykiss) LC50: 5560 - 6080mg/L (96h, Lepomis macrochirus) LC50: 6020 - 7070mg/L (96h, Pimephales promelas) LC50: 6420 - 6700mg/L (96h, Pimephales promelas) LC50: =12946mg/L (96h, Lepomis macrochirus) LC50: =7050mg/L (96h, Pimephales promelas)	-	EC50: 340.7 - 469.2mg/L (48h, Daphnia magna) EC50: =1000mg/L (48h, Daphnia magna)

**Persistence and degradability**

No information available.

**Bioaccumulation**

Inherently biodegradable.

**Other adverse effects**

No information available.

## 13. Disposal considerations

### Waste treatment methods

<b>Waste from residues/unused products</b>	Dispose of in accordance with local regulations. Dispose of waste in accordance with environmental legislation.
<b>Contaminated packaging</b>	Do not reuse empty containers.

## 14. Transport information

<b>DOT</b>	not regulated
<b>TDG</b>	not regulated
<b>MEX</b>	not regulated
<b>ICAO (air)</b>	not regulated
<b>IATA</b>	not regulated
<b>IMDG</b>	not regulated
<b>RID</b>	not regulated
<b>ADR</b>	not regulated
<b>ADN</b>	not regulated

## 15. Regulatory information

### International Inventories

<b>TSCA</b>	Complies
<b>DSL/NDSL</b>	Complies
<b>EINECS/ELINCS</b>	Complies
<b>ENCS</b>	This product complies with ENCS:
<b>IECSC</b>	This product complies with China:
<b>KECL</b>	Complies
<b>PICCS</b>	Complies
<b>AICS</b>	All the constituents of this material are listed on the Australian Inventory of Chemical Substances (AICS).

### **Legend:**

**TSCA** - United States Toxic Substances Control Act Section 8(b) Inventory

**DSL/NDSL** - Canadian Domestic Substances List/Non-Domestic Substances List

**EINECS/ELINCS** - European Inventory of Existing Chemical Substances/European List of Notified Chemical Substances

**ENCS** - Japan Existing and New Chemical Substances

**IECSC** - China Inventory of Existing Chemical Substances

**KECL** - Korean Existing and Evaluated Chemical Substances

**PICCS** - Philippines Inventory of Chemicals and Chemical Substances

### US Federal Regulations

#### **SARA 313**

Section 313 of Title III of the Superfund Amendments and Reauthorization Act of 1986 (SARA). This product does not contain any chemicals which are subject to the reporting requirements of the Act and Title 40 of the Code of Federal Regulations, Part 372.

**SARA 311/312 Hazard Categories**

Should this product meet EPCRA 311/312 Tier reporting criteria at 40 CFR 370, refer to Section 2 of this SDS for appropriate classifications.

**CWA (Clean Water Act)**

This product does not contain any substances regulated as pollutants pursuant to the Clean Water Act (40 CFR 122.21 and 40 CFR 122.42).

**CERCLA**

This material, as supplied, does not contain any substances regulated as hazardous substances under the Comprehensive Environmental Response Compensation and Liability Act (CERCLA) (40 CFR 302) or the Superfund Amendments and Reauthorization Act (SARA) (40 CFR 355). There may be specific reporting requirements at the local, regional, or state level pertaining to releases of this material.

**US State Regulations****California Proposition 65**

This product does not contain any Proposition 65 chemicals.

**U.S. State Right-to-Know Regulations**

This product does not contain any substances regulated under applicable state right-to-know regulations

**U.S. EPA Label Information**

**EPA Pesticide Registration Number** Not applicable

**16. Other information****NFPA**

**Health hazards** 0

**Flammability** 0

**Instability** 0

**Physical and chemical properties** -

**HMIS**

**Health hazards** 0

**Flammability** 0

**Physical hazards** 0

**Personal protection** X

**Key or legend to abbreviations and acronyms used in the safety data sheet****Legend Section 8: EXPOSURE CONTROLS/PERSONAL PROTECTION**

TWA TWA (time-weighted average)

STEL

STEL (Short Term Exposure Limit)

Ceiling Maximum limit value

**Key literature references and sources for data used to compile the SDS**

Agency for Toxic Substances and Disease Registry (ATSDR)

U.S. Environmental Protection Agency ChemView Database

European Food Safety Authority (EFSA)

EPA (Environmental Protection Agency)

Acute Exposure Guideline Level(s) (AEGl(s))

U.S. Environmental Protection Agency Federal Insecticide, Fungicide, and Rodenticide Act

U.S. Environmental Protection Agency High Production Volume Chemicals

Food Research Journal

Hazardous Substance Database

International Uniform Chemical Information Database (IUCLID)

Japan GHS Classification

Australia National Industrial Chemicals Notification and Assessment Scheme (NICNAS)

NIOSH (National Institute for Occupational Safety and Health)

National Library of Medicine's ChemID Plus (NLM CIP)

National Library of Medicine's PubMed database (NLM PUBMED)  
National Toxicology Program (NTP)  
New Zealand's Chemical Classification and Information Database (CCID)  
Organization for Economic Co-operation and Development Environment, Health, and Safety Publications  
Organization for Economic Co-operation and Development High Production Volume Chemicals Program  
Organization for Economic Co-operation and Development Screening Information Data Set  
World Health Organization

**Revision date** 29-September-2021  
**Revision Note** No information available.

**Disclaimer**

**The information provided in this Safety Data Sheet is correct to the best of our knowledge, information and belief at the date of its publication. The information given is designed only as a guidance for safe handling, use, processing, storage, transportation, disposal and release and is not to be considered a warranty or quality specification. The information relates only to the specific material designated and may not be valid for such material used in combination with any other materials or in any process, unless specified in the text.**

**End of Safety Data Sheet**



December 15, 2021

**Certification of Compliance with current Good Manufacturing Practices**

Dear Valued Customer:

Spectrum Chemical Mfg Corp certifies that the following product(s) is produced, processed, packaged and held in compliance with current Good Manufacturing Practices (cGMP) in accordance with the applicable parts of 21 CFR, parts 210 and 211 of the Code of Federal Regulations.

Catalog Number	Product Name
S9200	Sodium Chloride, USP, EP, BP, JP bioCERTIFIED™

Spectrum is an FDA registered and inspected Drug Establishment. Our United States Food and Drug Administration (USFDA) Registration numbers are as follows:

Spectrum-Gardena, CA: 2020632  
Spectrum-New Brunswick, NJ: 2246824

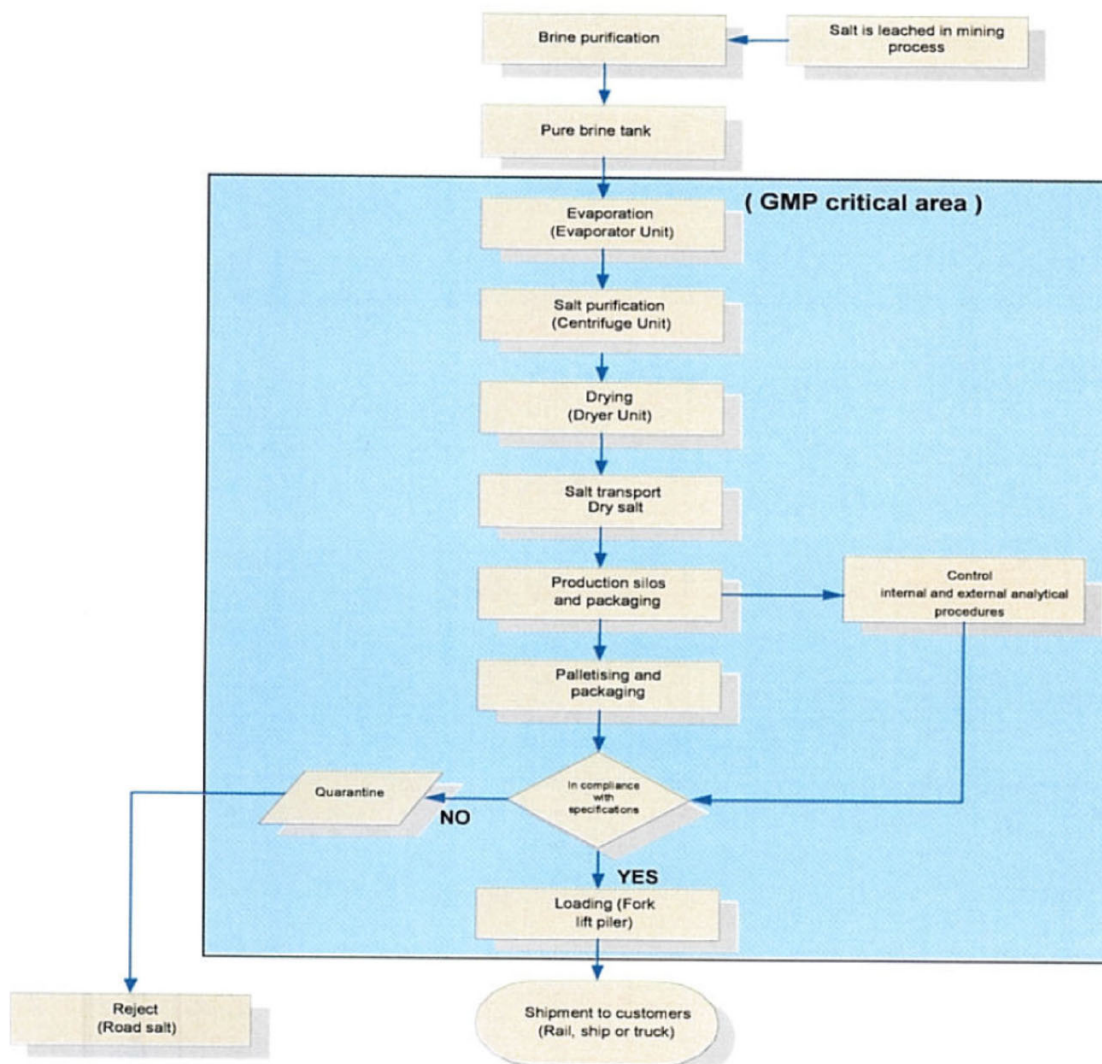
Thank you for your interest in Spectrum products. If we may be of further assistance, please feel free to contact the Quality Assurance department at 310-516-8000 or via email at [qualityassurance@spectrumchemical.com](mailto:qualityassurance@spectrumchemical.com)

Sincerely,

Oralia Chavez  
Quality Assurance Specialist

## Manufacturing Process Flowchart

### Sodium Chloride, USP, EP, BP, JP, bioCERTIFIED™ - Cat# S9200



#### CORPORATE HEADQUARTERS

769 Jersey Avenue

New Brunswick, NJ 08901

PHONE 732.214.1300

FAX 732.246.7132

#### WEST COAST FACILITY

14422 South San Pedro Street

Gardena, California 90248

PHONE 310.516.8000

FAX 310.516.9843



## **S9200, Sodium Chloride, USP, EP, BP, JP, bioCERTIFIED™**

### **Source Statement**

The above mentioned catalog item is derived from mineral origin. No animal or plant derived products are used in the manufacturing process.

### **BSE/TSE Statement**

The above mentioned catalog item does not contain nor is manufactured using any animal derived products and is therefore, BSE/TSE free.

### **Allergen Statement**

The above mentioned catalog item does not contain any of the following:

- Milk
- Egg
- Fish
- Shellfish
- Tree Nuts
- Wheat
- Peanuts
- Soy
- Cereals containing Gluten
- Celery
- Mustard
- Sesame Seed
- Corn
- Latex
- Sulfites > 10 ppm

### **EU Fragrance Allergen Statement**

The above mentioned catalog item complies with the requirements of EC Directive 1223/2009.

### **GMO Statement**

The above mentioned catalog item is manufactured without the use of genetically modified organisms and is therefore GMO free.

### **Melamine Statement**

The above mentioned catalog does not use or add melamine to the manufacturing process and is considered melamine-free.

## Nitrosamine Statement

Based on knowledge of the manufacturing process, nitrosamine impurities are not known or suspected to be present in this material.

## Animal Testing Statement

The above mentioned catalog item has not been tested on animals.

## Organic Compliance Statement

The above mentioned catalog item has not been produced using GMOs, irradiation, ethylene oxide (EtO) or sewage sludge.

## Shelf Life Statement

The above mentioned catalog item is typically assigned a shelf life of 28 months from the date of manufacture. The actual assigned shelf life for any specific lot should be referenced on the Certificate of Analysis.

## Other Chemicals Statement

Spectrum does not have any reason to suspect the above mentioned catalog item contains any of the following chemicals. This product does not come into contact with these chemicals during packaging or storage:

- |                     |                 |
|---------------------|-----------------|
| • Aflatoxins        | • Parabens      |
| • Antibiotics       | • Pesticides    |
| • Bisphenol A (BPA) | • Phthalates    |
| • CMR Substances    | • Preservatives |



**RE: Elemental Impurities - Sodium Chloride, USP, EP, BP, JP, bioCERTIFIED™**

To Whom It May Concern:

Thank you for your interest in Spectrum high quality chemicals.

The above material complies with the USP<232>, <233> Elemental Impurities and the ICH Q3D Elemental Impurities Guideline. The following elemental impurities are likely to be present:

Elemental Impurity		Class	Expected Concentration
Vanadium	V	2A	< 5 ppm
Nickel	Ni	2A	< 10 ppm
Lithium	Li	3	< 27.5 ppm
Molybdenum	Mo	3	< 150 ppm
Copper	Cu	3	< 150 ppm
Chromium	Cr	3	< 550 ppm

Other elemental impurities considered by USP <232>, <233> and ICH Q3D which are not addressed in the above mentioned table are not likely to be present. These substances are not used in the production process, are not intentionally added or known to be present in the above mentioned material.

This information is subject to change and is intended for risk assessment only. It is responsibility of the end user to evaluate suitability of any chemical for the intended use as well as to assess compound-specific limits of daily intake of metal impurities. For lot-specific information, please refer to the respective Certificate of Analysis.

If you have any further questions, please contact us by telephone at 1(800)772-8786 Option 2, or by email at [TechServices@spectrumchemical.com](mailto:TechServices@spectrumchemical.com).

Sincerely,

Technical Services  
Spectrum Chemical Mfg. Corp.

This document has been produced electronically and is valid without a signature.

**CORPORATE HEADQUARTERS**

769 Jersey Avenue  
New Brunswick, NJ 08901  
PHONE 732.214.1300  
FAX 732.246.7132

**WEST COAST FACILITY**

14422 South San Pedro Street  
Gardena, California 90248  
PHONE 310.516.8000  
FAX 310.516.9843



**RE: Residual Solvents - Sodium Chloride, USP, EP, BP, JP, bioCERTIFIED™ -  
Cat# S9200**

To Whom It May Concern:

Thank you for your interest in Spectrum high quality chemicals.

The above mentioned catalog item complies with the requirements of the USP <467> Residual Solvents and the ICH Q3C Residual Solvents Guideline. No Class 1, Class 2, Class 3 or other solvents are used or produced in the manufacture of this product.

For lot-specific information, please refer to the respective Certificate of Analysis.

If you have any further questions, please contact us by telephone at 1(800)772-8786 Option 2, or by email at [TechServices@spectrumchemical.com](mailto:TechServices@spectrumchemical.com).

Sincerely,

Technical Services  
Spectrum Chemical Mfg. Corp.

This document has been produced electronically and is valid without a signature.

CORPORATE HEADQUARTERS

769 Jersey Avenue  
New Brunswick, NJ 08901  
PHONE 732.214.1300  
FAX 732.246.7132

WEST COAST FACILITY

14422 South San Pedro Street  
Gardena, California 90248  
PHONE 310.516.8000  
FAX 310.516.9843

## Label Information

The Spectrum label presents technical and safety information in an easily understood format. Our technical specialists stay abreast of the latest requirements of the Globally Harmonized System for Classification and Labelling of Chemicals (GHS), as well as the Occupational Safety and Health Administration (OSHA), the Food and Drug Administration (FDA) and other government regulatory agencies in order to ensure compliance, accuracy and concise hazard communication.

**USE CARE:** This material has been evaluated per GHS/OSHA criteria and is not classified as hazardous. All chemicals may pose unknown hazards and must be used with caution. Use personal protection and safe handling methods consistent with proper workplace safety practices. Consult SDS for additional properties and precautions. If adverse reaction occurs seek medical attention.

**KEEP FROM CHILDREN**

**WARNING:**  
Cancer and Reproductive Harm-  
www.P65Warnings.ca.gov

**spectrum®**  
CHEMICAL MFG CORP

**S9200** **1 KG**

**Sodium Chloride**

(Salt)

USP, EP, BP, JP,  
bioCERTIFIED™

CAS 7647-14-5

**CAUTION:** For manufacturing, processing or repacking.  
Rx only. Further processing and testing required for use in  
parenteral applications.  
**Read and understand the label and Safety Data Sheet  
(SDS) prior to use.**

**Chemical Emergency: (800)424-9300**  
www.SpectrumChemical.com

**NaCl** **F.W. 58.44**

Not sterile.

Manufacturer/Supplier Code ..... ?  
Manufacturer Lot Number ..... ?

Assay (NaCl, Dried Basis) ..... 99.0-100.5%  
Appearance of Solution ..... To pass test  
Acidity or Alkalinity ..... To pass test

**MAXIMUM LIMITS**

Loss on Drying ..... 0.5%  
Bromides ..... 100 ppm  
Phosphates ..... 25 ppm  
Iodides ..... To pass test  
Aluminum ..... 0.2 ppm  
Potassium ..... 500 ppm  
Magnesium and Alkaline-Earth Metals (as Ca) ..... 100 ppm  
Arsenic (As) ..... 1 ppm  
Iron (Fe) ..... 2 ppm  
Barium (Ba) ..... To pass test  
Ferrocyanides ..... To pass test  
Sulfate (SO<sub>4</sub>) ..... 200 ppm  
Nitrites ..... To pass test  
Heavy Metals ..... 3 ppm  
Elemental Impurities ..... As reported  
Residual Solvents ..... To pass test  
Bacterial Endotoxins ..... 5 IU/g  
TYMC ..... 1000 CFU/g  
TYMC ..... 100 CFU/g

HYGROSCOPIC: Keep tightly closed.

**Repackaged by Spectrum as:**  
**Lot No. 062233**

G 1/K7GHS-A A

**SPECTRUM CHEMICAL MFG. CORP. Gardena, CA 90248 • New Brunswick, NJ 08901**

- |   |   |   |
|---|---|---|
| <p><b>A</b> Bar Code</p> <p><b>B</b> GHS Hazard Pictograms</p> <p><b>C</b> Warning, Safety Data and Precautionary Information</p> <p><b>D</b> Product Catalog Number</p> <p><b>E</b> Item Name, Form, Grade</p> <p><b>F</b> Size/Quantity</p> | <p><b>G</b> Chemical Abstracts Service (CAS) Registry Number</p> <p><b>H</b> Caution Information</p> <p><b>I</b> DOT Shipping Information</p> <p><b>J</b> Toll-Free 24-Hour Chemical Emergency Telephone Number</p> | <p><b>K</b> Empirical Formula, Formula Weight and Technical Specifications Panel</p> <p><b>L</b> Expiration Information</p> <p><b>M</b> Lot Number</p> <p><b>N</b> Kosher Certified by Kosher Supervision of America (KSA).</p> <p><b>O</b> Storage Color Band</p> <p><b>P</b> Halal Certified by IFANCA</p> <p><b>Q</b> bioCertified</p> |
|---|---|---|

This color-coded band indicates the hazard most likely to be posed by that material under storage conditions. The criteria used to assign band colors have been established by the Storage Code working group of the Society for Chemical Hazard Communication (SCHC). It is recommended that like colors be stored together, unless otherwise stated, based on the color codes indicated to the right. However, it is the responsibility of the customer to check with their local fire department for possible conflicts with our recommendations when storing hazardous chemicals.

- YELLOW:** Oxidizer
- RED:** Flammable
- GREEN:** General Storage
- BLUE:** Health Hazard
- WHITE:** Corrosive

### Spectrum Chemical Mfg Corp

#### Corporate Headquarters:

769 Jersey Ave.  
New Brunswick, NJ 08901  
732.214.1300

#### West Coast Facility:

14422 S. San Pedro St.  
Gardena, CA 90248  
310.516.8000