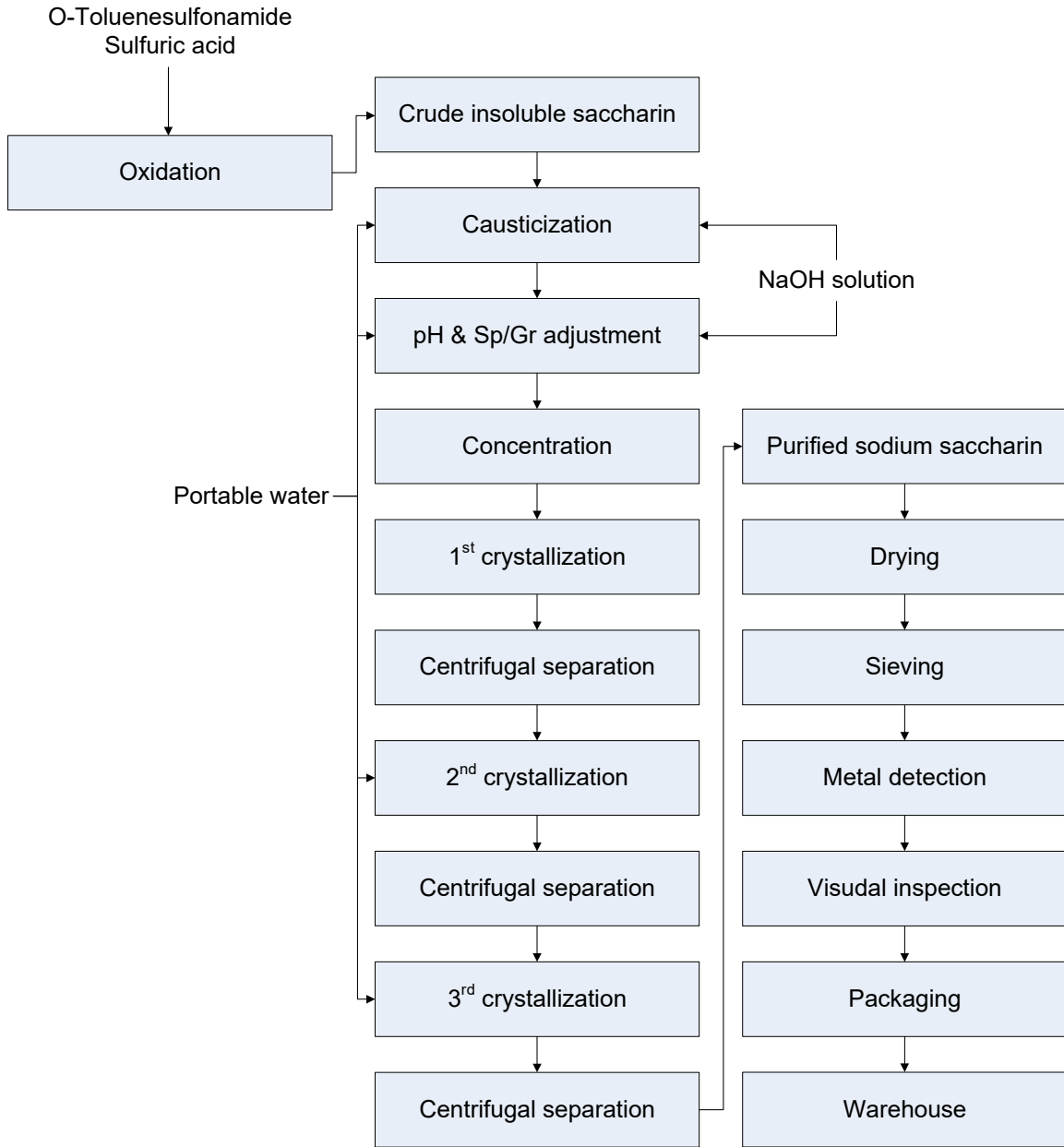


## Manufacturing Process Flowchart

### Saccharin Sodium, Dihydrate, Powder, NF – SO200



**CORPORATE HEADQUARTERS**

769 Jersey Avenue  
 New Brunswick, NJ 08901  
 PHONE 732.214.1300  
 FAX 732.246.7132

**WEST COAST FACILITY**

14422 South San Pedro Street  
 Gardena, California 90248  
 PHONE 310.516.8000  
 FAX 310.516.9843