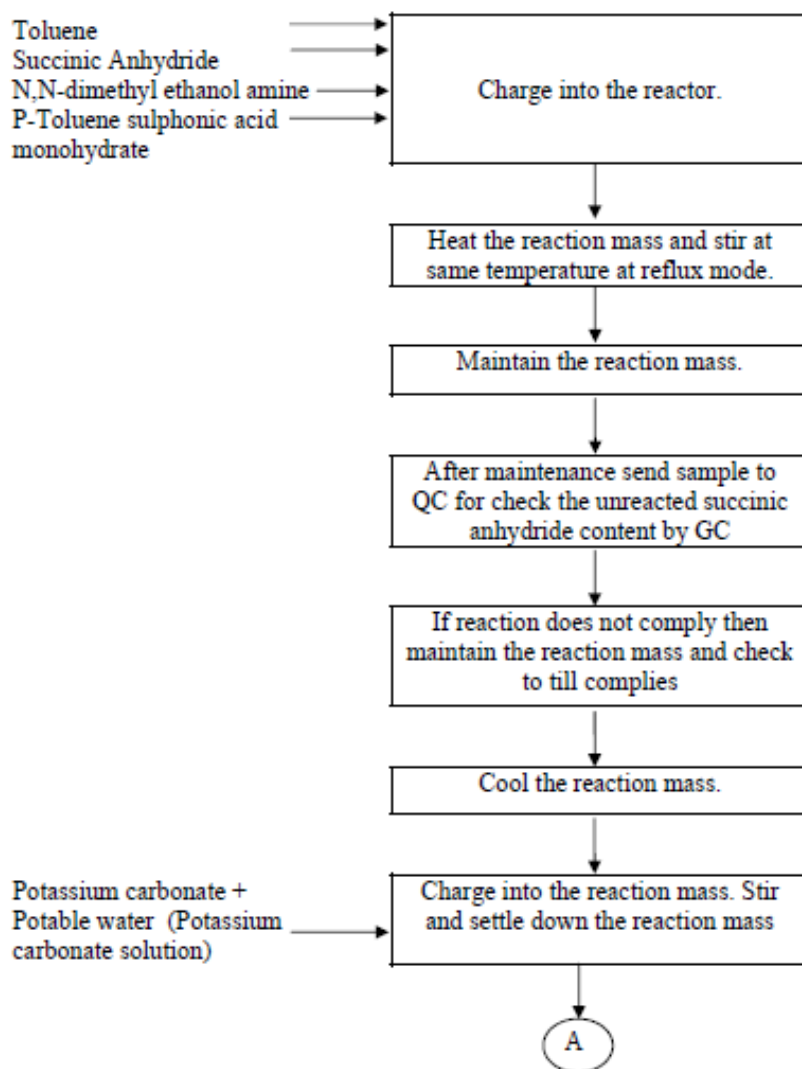


Manufacturing Process Flowchart [Succinylcholine Chloride, Dihydrate, USP] (S1696)

Process flow diagram of Succinylcholine Chloride :

Stage-I: Manufacturing process flow of bis (2-(dimethylamino) ethyl) succinate (Lot)



CORPORATE HEADQUARTERS

769 Jersey Avenue

New Brunswick, NJ 08901

PHONE 732.214.1300

FAX 732.246.7132

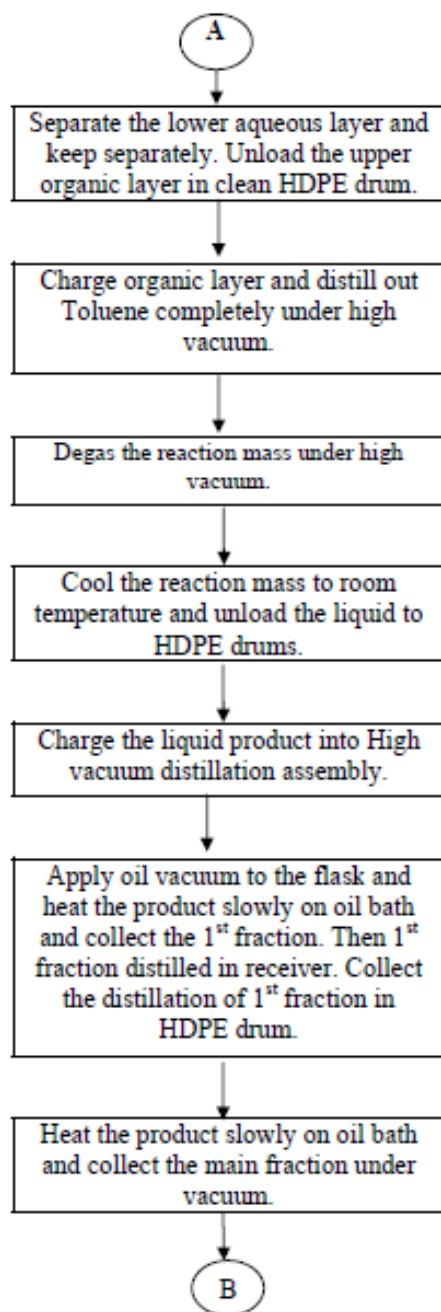
WEST COAST FACILITY

14422 South San Pedro Street

Gardena, California 90248

PHONE 310.516.8000

FAX 310.516.9843



CORPORATE HEADQUARTERS

769 Jersey Avenue

New Brunswick, NJ 08901

PHONE 732.214.1300

FAX 732.246.7132

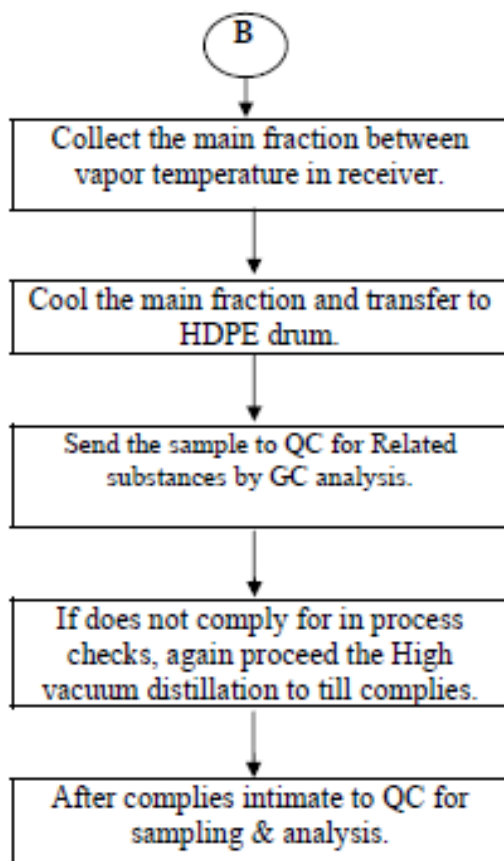
WEST COAST FACILITY

14422 South San Pedro Street

Gardena, California 90248

PHONE 310.516.8000

FAX 310.516.9843



CORPORATE HEADQUARTERS

769 Jersey Avenue

New Brunswick, NJ 08901

PHONE 732.214.1300

FAX 732.246.7132

WEST COAST FACILITY

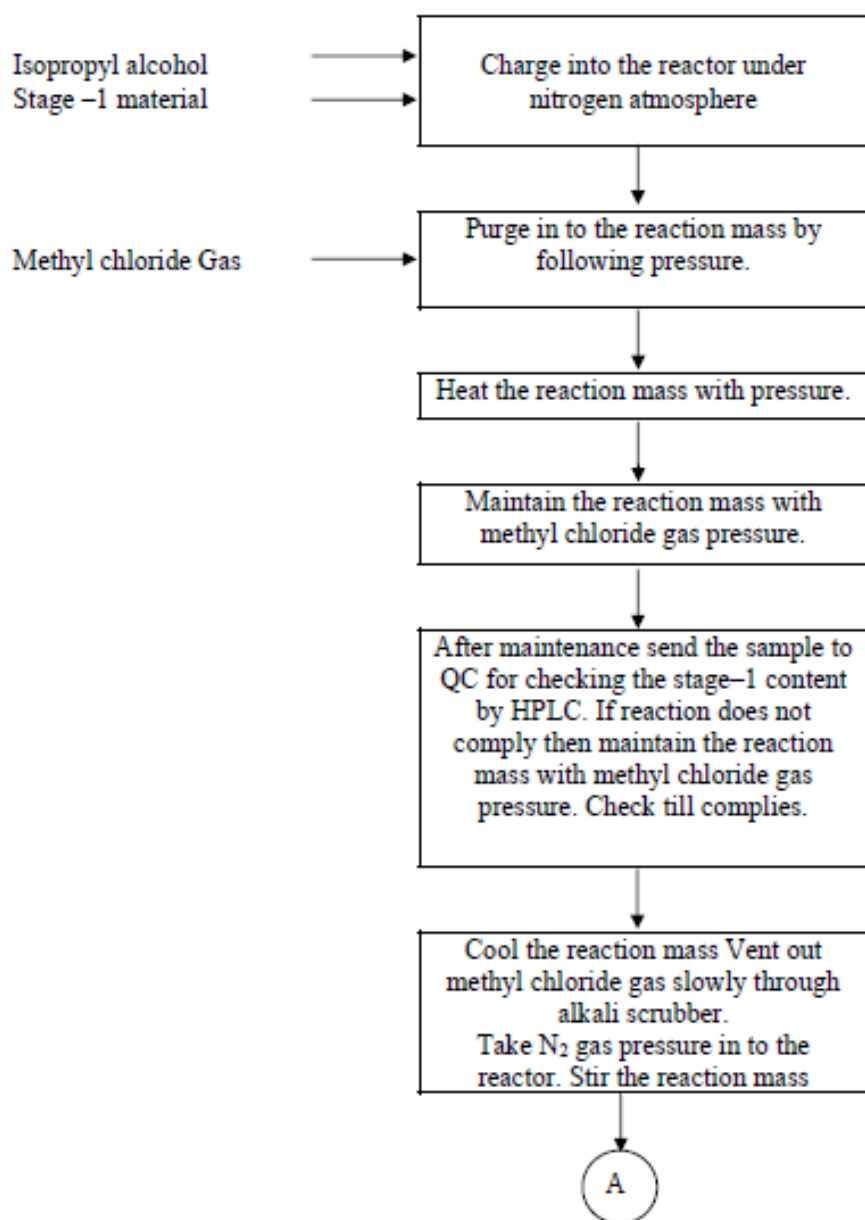
14422 South San Pedro Street

Gardena, California 90248

PHONE 310.516.8000

FAX 310.516.9843

Stage-II : Manufacturing process flow of Succinylcholine Chloride crude (Lot)



CORPORATE HEADQUARTERS

769 Jersey Avenue

New Brunswick, NJ 08901

PHONE 732.214.1300

FAX 732.246.7132

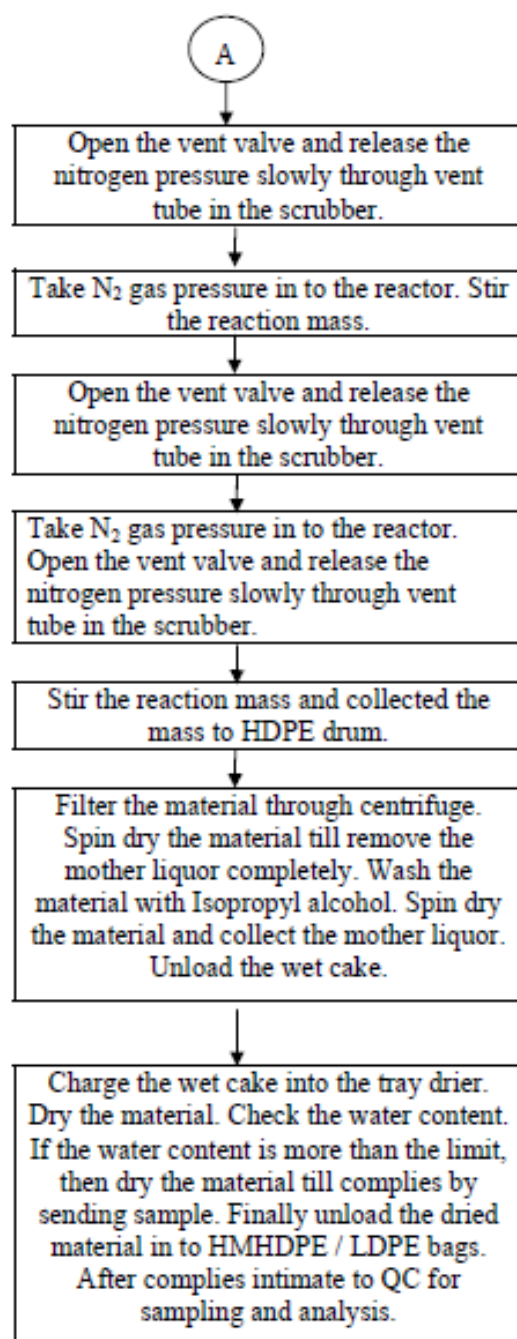
WEST COAST FACILITY

14422 South San Pedro Street

Gardena, California 90248

PHONE 310.516.8000

FAX 310.516.9843



CORPORATE HEADQUARTERS

769 Jersey Avenue

New Brunswick, NJ 08901

PHONE 732.214.1300

FAX 732.246.7132

WEST COAST FACILITY

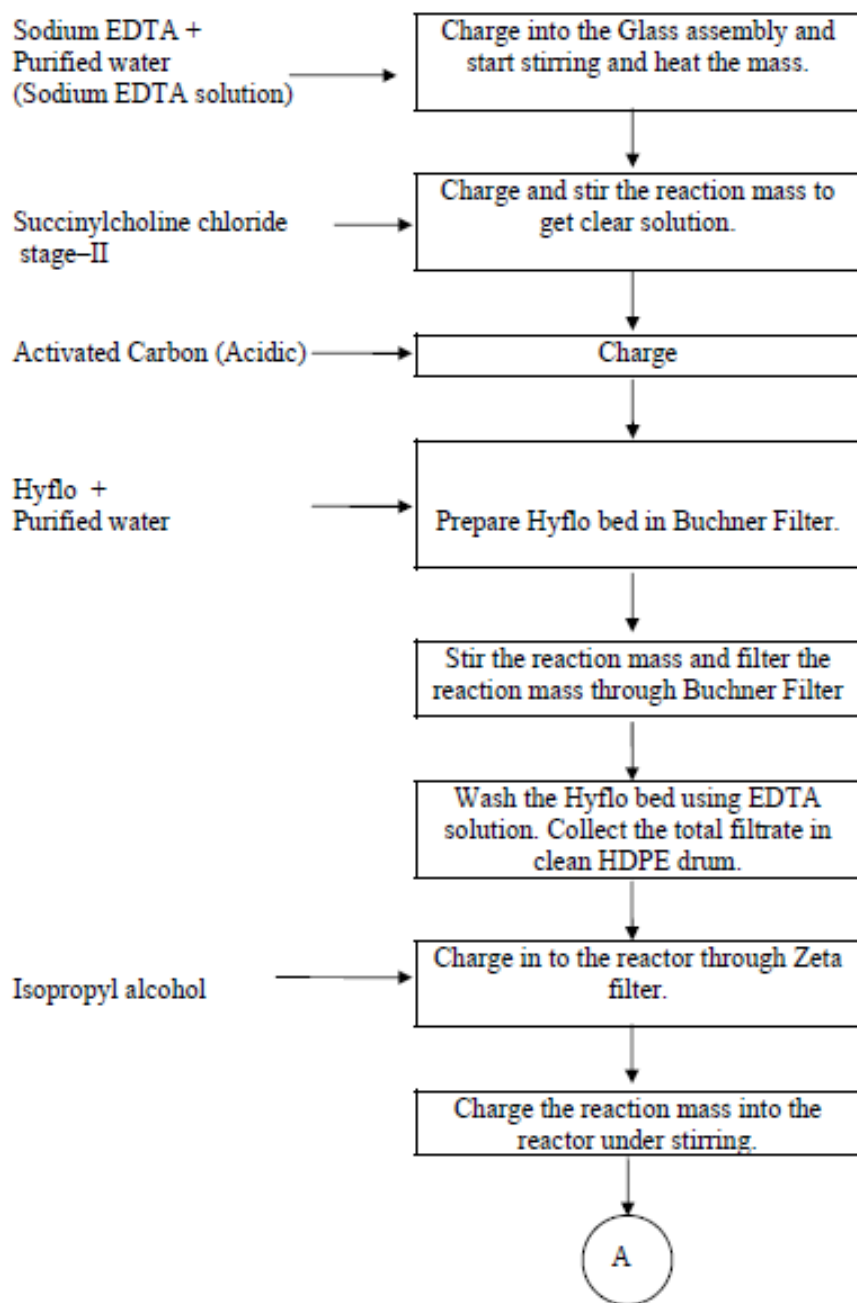
14422 South San Pedro Street

Gardena, California 90248

PHONE 310.516.8000

FAX 310.516.9843

Stage III : Manufacturing process flow of Succinyl Choline Chloride (Batch)



CORPORATE HEADQUARTERS

769 Jersey Avenue

New Brunswick, NJ 08901

PHONE 732.214.1300

FAX 732.246.7132

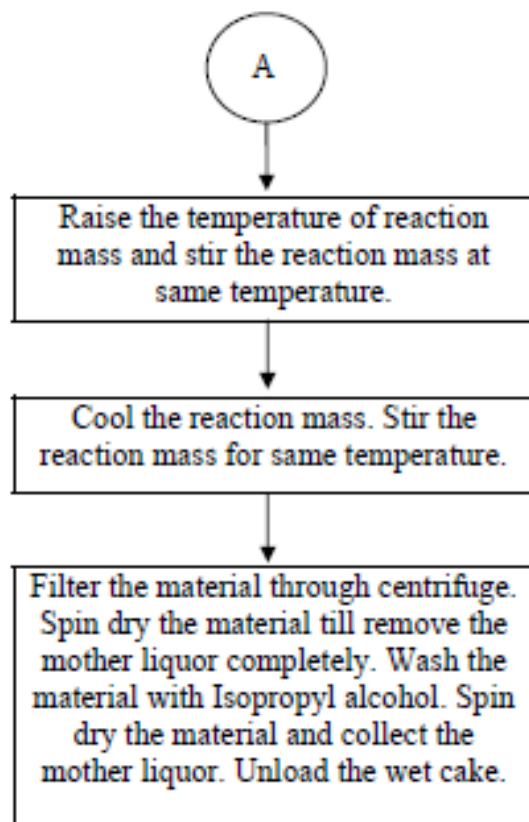
WEST COAST FACILITY

14422 South San Pedro Street

Gardena, California 90248

PHONE 310.516.8000

FAX 310.516.9843



CORPORATE HEADQUARTERS

769 Jersey Avenue

New Brunswick, NJ 08901

PHONE 732.214.1300

FAX 732.246.7132

WEST COAST FACILITY

14422 South San Pedro Street

Gardena, California 90248

PHONE 310.516.8000

FAX 310.516.9843

Purification Process :

Sodium EDTA +
Purified water
(Sodium EDTA solution)

Charge into the reactor through Zeta filter and start stirring and heat the mass.

Wet Cake

Charge into the reactor. Stir the reaction mass to get clear solution. Unload the reaction mass in to the clean stainless steel containers.

Isopropyl Alcohol

Charge into reactor through Zeta filter.

Reaction mass

Charge into the reactor under stirring.

Raise the temperature of reaction mass and stir the reaction at same temperature.

Cool the reaction mass slowly. Stir the reaction mass for same temperature.

Filter the material through centrifuge. Spin dry the material till remove the mother liquor completely. Wash the material with Isopropyl alcohol. Spin dry the material and collect the mother liquor. Unload the wet cake. Send the sample to QC.

A

CORPORATE HEADQUARTERS

769 Jersey Avenue

New Brunswick, NJ 08901

PHONE 732.214.1300

FAX 732.246.7132

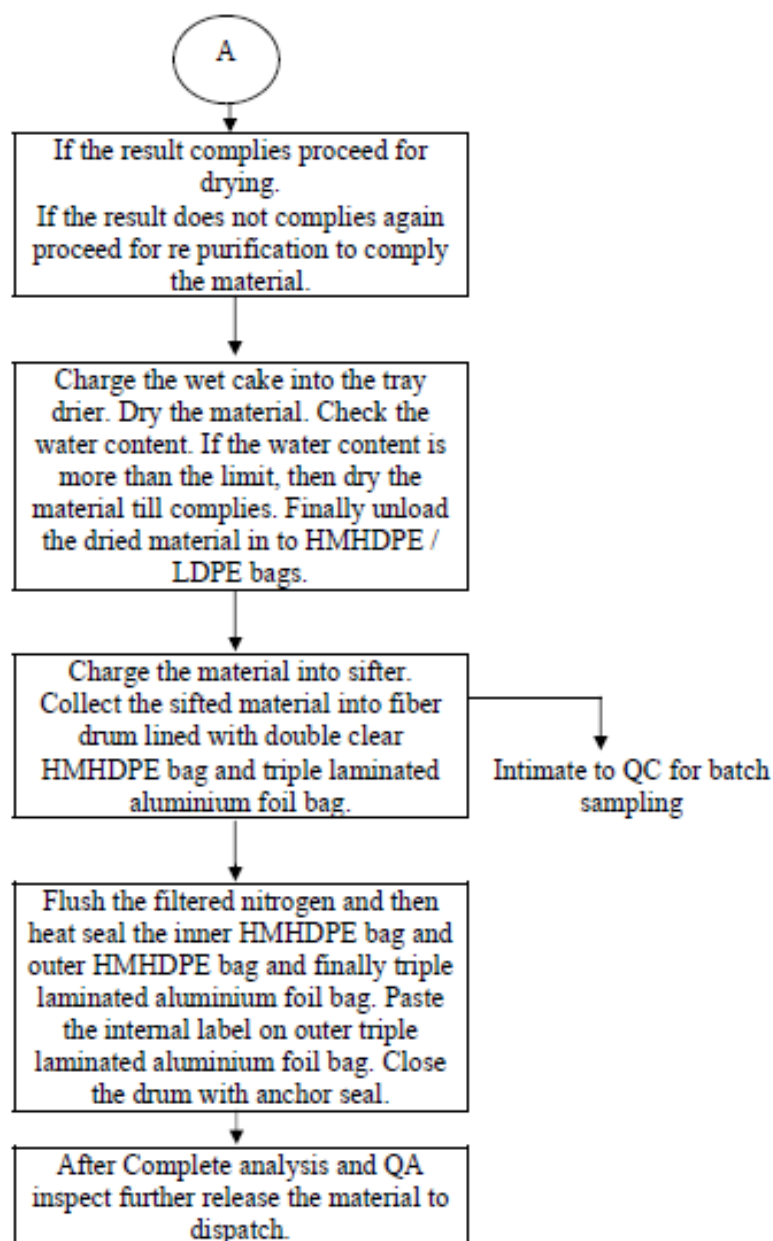
WEST COAST FACILITY

14422 South San Pedro Street

Gardena, California 90248

PHONE 310.516.8000

FAX 310.516.9843



CORPORATE HEADQUARTERS

769 Jersey Avenue

New Brunswick, NJ 08901

PHONE 732.214.1300

FAX 732.246.7132

WEST COAST FACILITY

14422 South San Pedro Street

Gardena, California 90248

PHONE 310.516.8000

FAX 310.516.9843