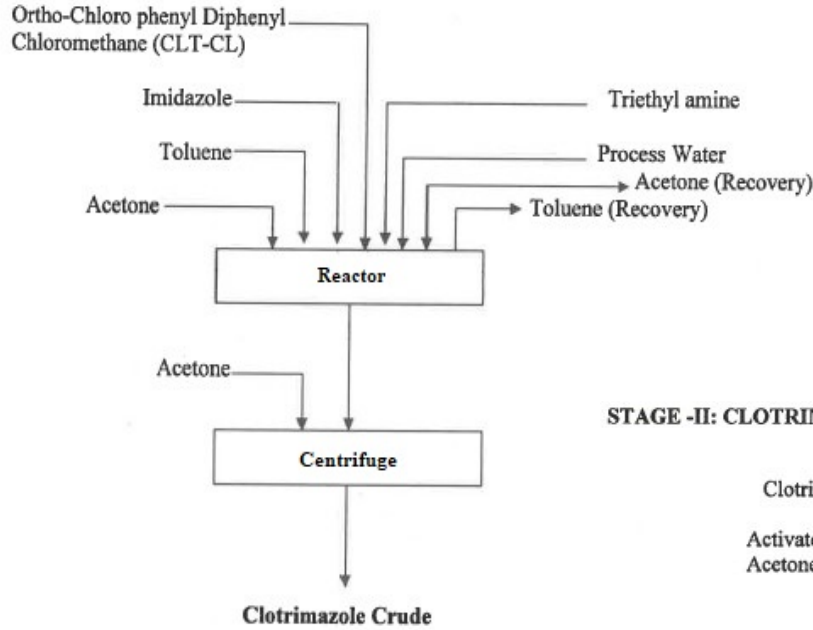
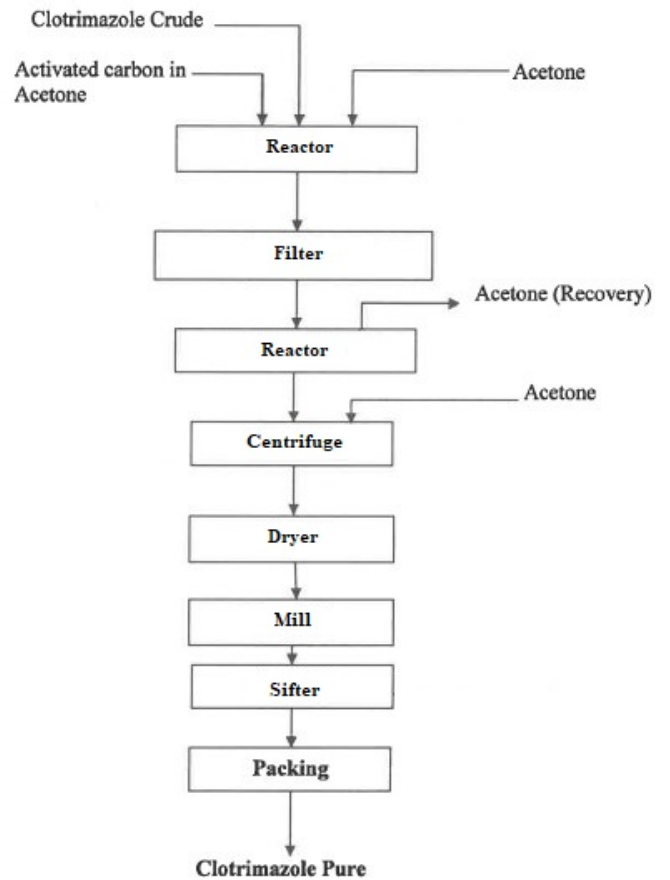


Manufacturing Process Flowchart Clotrimazole, Powder, USP (Cat# CL127)

STAGE -I: CLOTRIMAZOLE CRUDE



STAGE -II: CLOTRIMAZOLE PURE



CORPORATE HEADQUARTERS

769 Jersey Avenue
 New Brunswick, NJ 08901
 PHONE 732.214.1300
 FAX 732.246.7132

WEST COAST FACILITY

14422 South San Pedro Street
 Gardena, California 90248
 PHONE 310.516.8000
 FAX 310.516.9843