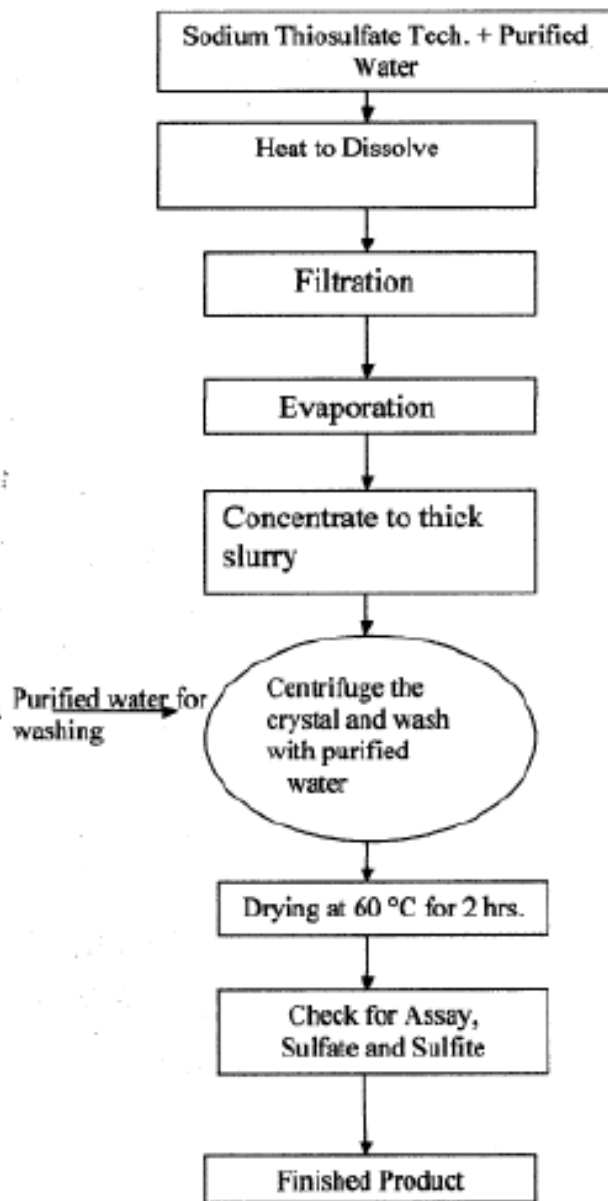


Manufacturing Process Flowchart Sodium Thiosulfate, Pentahydrate, Crystal, USP, EP, BP, JP (Cat# SO210)



CORPORATE HEADQUARTERS

769 Jersey Avenue
New Brunswick, NJ 08901
PHONE 732.214.1300
FAX 732.246.7132

WEST COAST FACILITY

14422 South San Pedro Street
Gardena, California 90248
PHONE 310.516.8000
FAX 310.516.9843